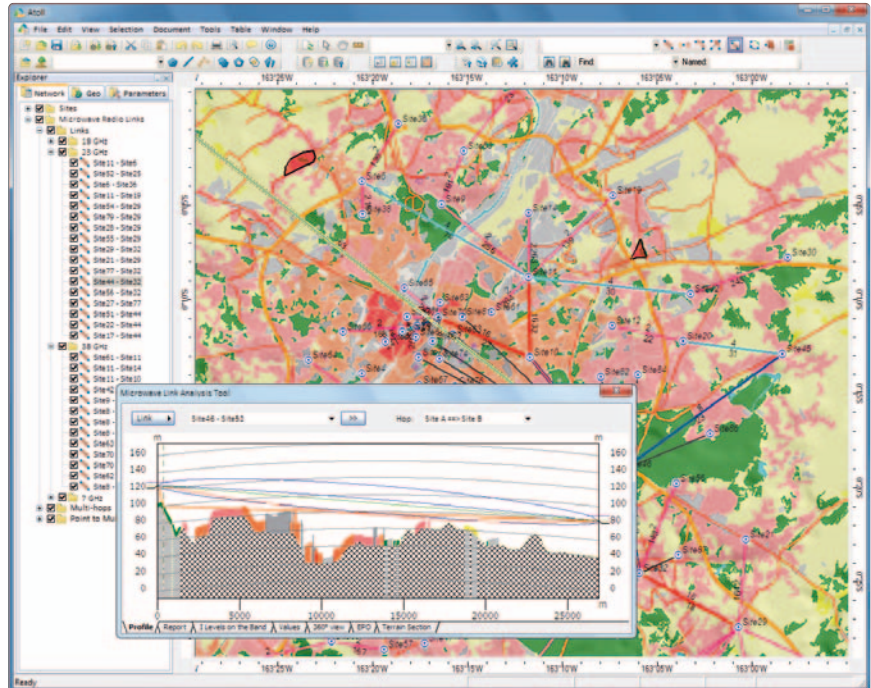


Atoll Microwave

Microwave Link Planning Software

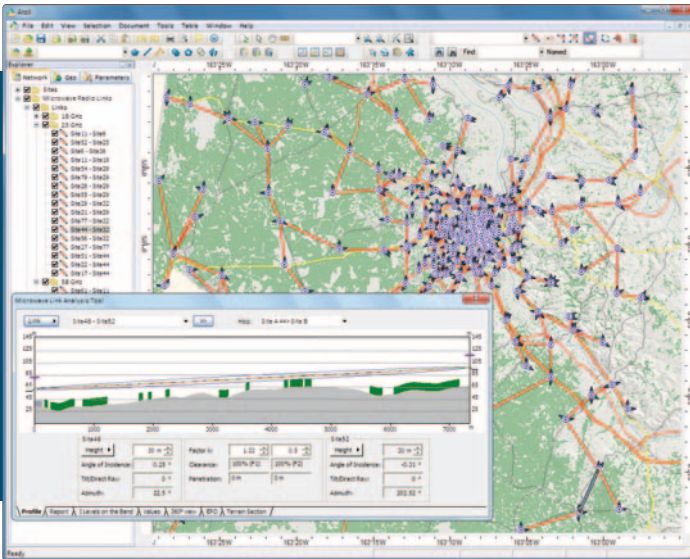


Forsk

version **3.1**

Atoll Microwave

General Features



Atoll Microwave is a state-of-the-art point-to-point and point-to-multipoint microwave link planning software. It allows designing large microwave link networks, according to the ITU standards. Based on the leading Atoll platform, Atoll Microwave includes all its GIS, data and user management features. Atoll Microwave can share the site database with Atoll radio planning and optimisation modules, allowing easy data consistency management across the operator organisation. Atoll Microwave is used by wireless operators and equipment vendors worldwide.

GIS Features

- Optimised cartographic database supporting
 - Digital elevation models
 - Clutter data (type and height)
 - 3D building data
 - Scanned maps
 - Vector data
 - Climate data
- Integrated cartography editor (vector/raster)
- Interface with GIS tools: MapInfo, ArcView, Google Earth
- Support for Web Map Services (WMS)

User and Database Management

- Flexible database structure allowing integration of user-defined parameters
- Open antenna and equipment database allowing import of equipment vendor data
- Multi-user support including database consistency management, data synchronisation, and user disconnection/reconnection from/to the database
- Advanced administration module supporting data access and user privilege management
- Support for standalone/centralised/distributed configurations
- Advanced import/export features allowing quick data migration from other MW planning software

Task Automation and Scripting

- Scripting language enabling integration of user-defined macros
- Open interface allowing integration of additional modules

Printing and Reports

- Flexible report generator
- User-defined reports based on macros
- Export of reports and plots to other software
- Printers and plotters up to A0 format



Multiple Repeater Design

Hardware and software requirements

- ◉ Minimum recommended configuration for workstations or laptops
 - Dual-core processor with 2 GB of RAM
 - Microsoft Windows 2000, Windows XP, Windows Vista, or Windows 7
- ◉ Relational Database Management System (not required for standalone configurations)
 - Oracle 9i and 10g
 - Sybase Adaptive Server V12.5
 - Microsoft SQL Server 2005
 - Microsoft Access

Forsk

◉ Head Office

7, rue des Briquetiers
31700 Blagnac - France
Tel: +33 562 747 210
Fax: +33 562 747 211

◉ US Office

200 South Wacker Drive - Suite 3100
Chicago, IL 60606 - USA
Tel: +1 312 674 4846
Fax: +1 312 674 4847

◉ China Office

Suite 302, 3/F, West Tower,
Jiadu Commercial Building,
No.66 Jianzhong Road,
Tianhe Hi-Tech Industrial Zone,
Guangzhou, 510665 P.R. of China
Tel: +86 20 8553 8938
Fax: +86 20 8553 8285

www.forsk.com

